



# Empowering Networks

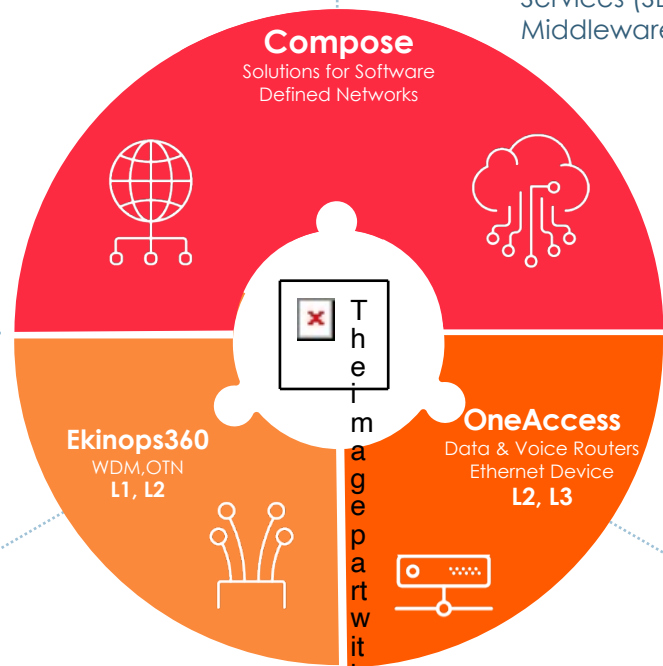
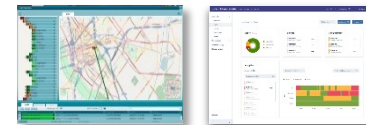
Corporate Presentation

# Ekinops Portfolio

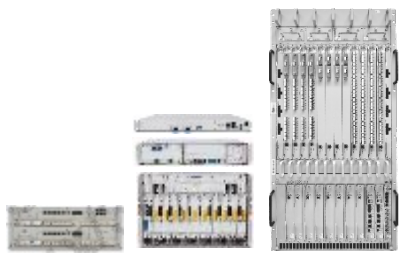


## COMPOSE

Manager (NMS, Director)  
Services (SD-WAN, VNFs)  
Middleware (Appstore)



## EKINOPS360



Optical Transport Solutions for metro / long-haul/ ....

## ONEACCESS

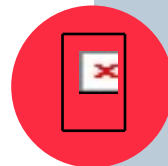
Software  
Hardware



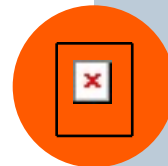
Devices for Branch Offices and Edge Networks



# A Partner for Service Providers



Working with  
**16 of the top 30**  
service providers



Shipped ~3 **million**  
CPEs worldwide

# Ekinops Branch Access Solutions



**Compose**  
Solutions for Software  
Defined Networks &  
Network Management  
System



**ONEACCESS**

**OneAccess**  
Data & Voice Routers  
Ethernet Device  
L2, L3



Layer 2

Layer 3

Compose Alliances

Compose ProServ

Compose  
Manager



**DIRECTOR & OneManage**

Compose  
Services



**SD-WAN**  
Xpress  
**SD-WAN**  
Prime

**VNF**  
3rd Party

Ekinops OneOS6 Built-in or Ekinops VNFs

32 certified 3rd Party VNFs

**OneOS6**

Compose Middleware

**OneOS6**  
LIM



Branch Office Data Routers



Branch Voice + Data Routers



Mid-Range Data Routers



Ethernet Access Devices



High-Density Voice +  
Data Routers



- OneAccess OVP
- Dell VEP
- 3rd Party White Boxes

Data Products

Voice Products

uCPEs

# OneOS6 pCPE Range - SD-WAN Built-In

- NETCONF/YANG & industry standard CLI
- Dual-WAN for Cloud resiliency
- Fiber from 100 Mbps to 10Gbps

**SMB**

ONE526 voice/data

ONE521  
250Mbps



A/VDSL 4G SBC


ONE421  
100Mbps



A/VDSL 4G SBC

**Multi-site Enterprise**


ONE2501  
600Mbps/  
1Gbps\*



4G SBC


ONE526/1526 voice/data

ONE531  
350Mbps




A/VDSL 4G SBC

ONE521  
250Mbps




A/VDSL 4G SBC

ONE421  
100Mbps



A/VDSL 4G SBC

**High Speed and Small Datacenter**



ONE3540  
5Gbps/10Gbps\*

ONE2540  
2Gbps



SBC

ONE2515 voice/data

ONE2520  
1Gbps



4G SBC

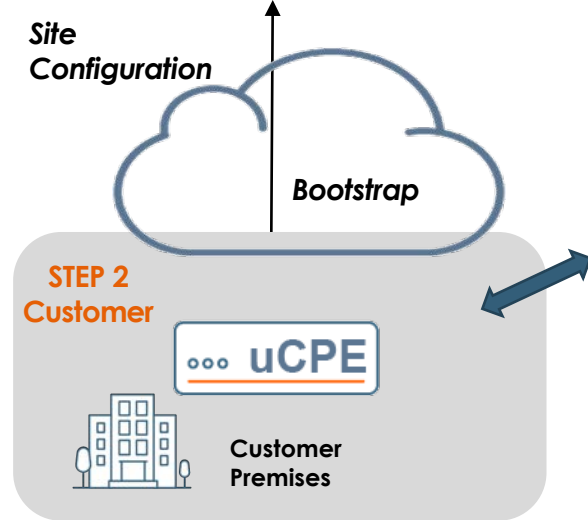
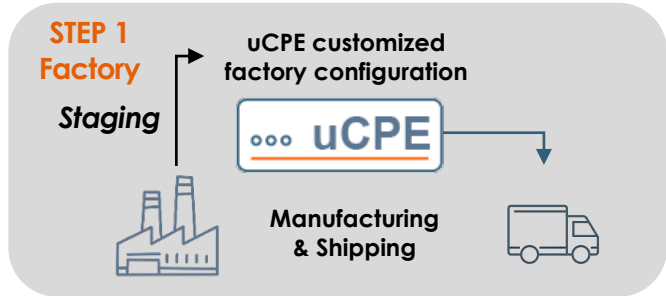


# OneOS6 Built-in Services

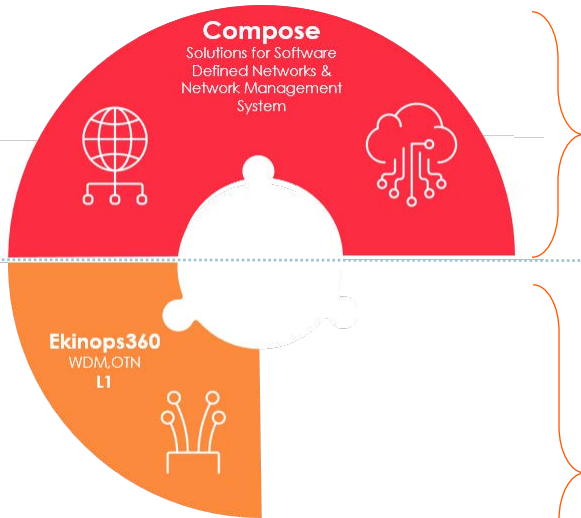


**All Enterprise Edge Services in “One Box” with all underlays supported  
best cost / performance ratio**

# Truly uCPE Zero Touch Provisioning Morph Any Edge Device Into a Software-Defined Solution



# Ekinops Optical Transport Solutions

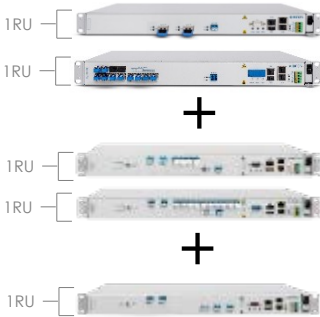


Layer 1

**EKINOPS360**

Compose  
Manager

Celestis  
*nms*



White Box Transport



Modular Transport & OTN Switching





# EKINOPS 360 Transport & Switching Applications

- Agile Networking
- Efficient Transport
- Single Fiber Working

**Long Haul / Ultra-Long Haul**  
Terrestrial and submarine

**Metro Transport & Enterprise Networks**

**Alien Wavelength**

**Mobile Fronthaul & Backhaul**  
- Extended Temperature Range

**Data Center Interconnection**

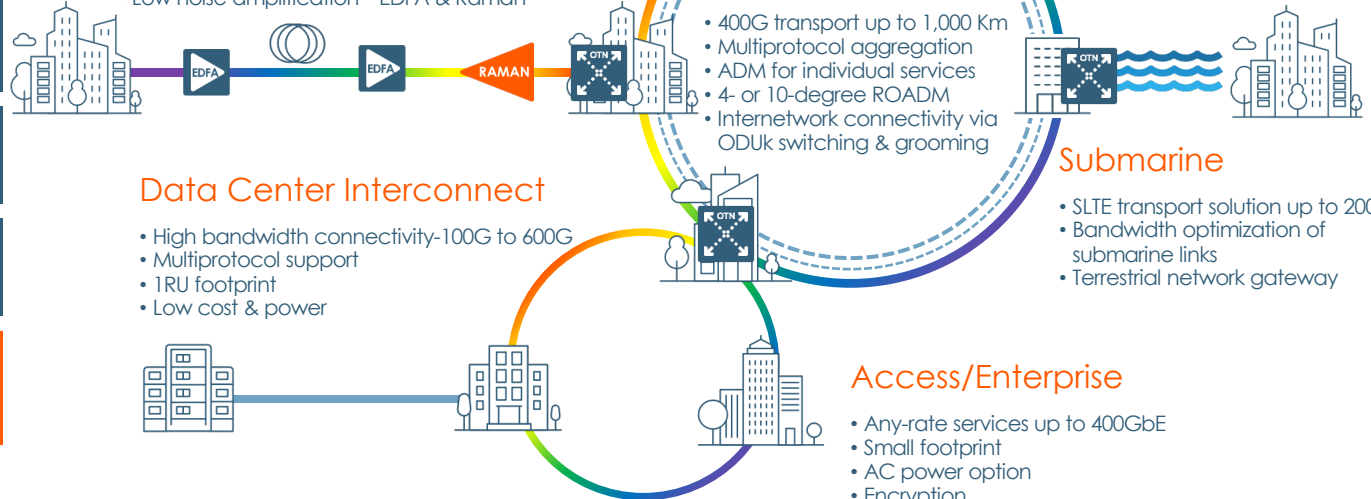
- Multi-protocol Aggregation
- Bandwidth Optimization
- Protection & Restoration

## Mobile Fronthaul/Backhaul

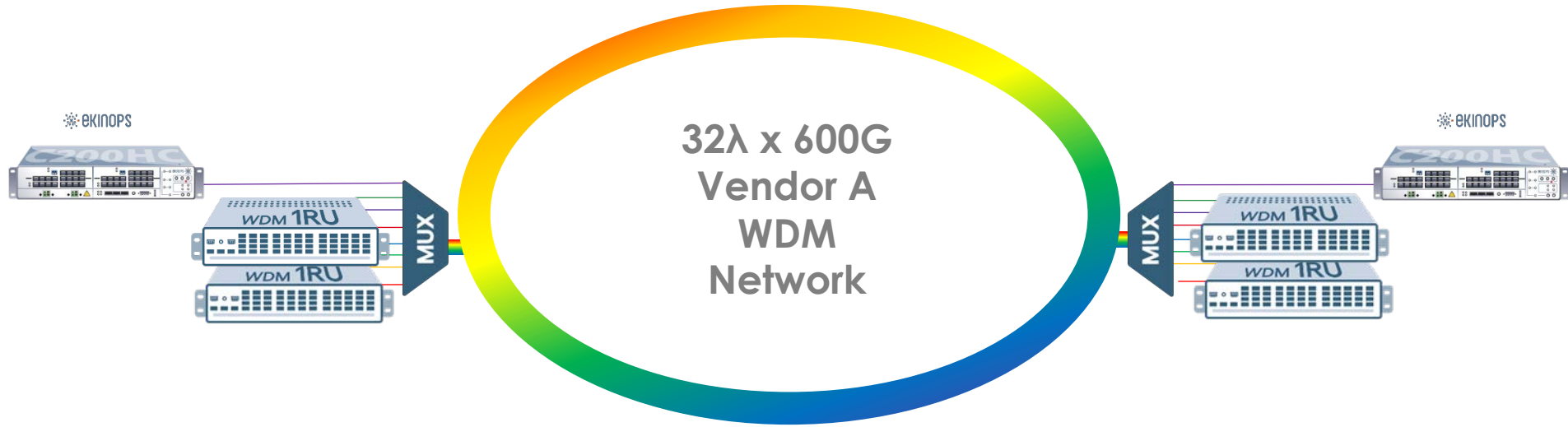
- Passive filter
- Active Ethernet
- CPRI
- Extended Temperature Range

## Long Haul

- 100G up to 10,000 Km
- 200G over 4,000 Km
- DWDM and OTN Switching
- Low noise amplification—EDFA & Raman



“Alien Wave” : a cost-effective way to add capacity or new services on top of existing network



A fully transparent and interoperable solution



Thank you

Ekinops SA  
3 rue Blaise Pascal,  
22300 Lannion, France

[www.ekinops.com](http://www.ekinops.com)

