



# Technology Update LINX Manchester

Joe Jefford  
Senior Network Engineer

---

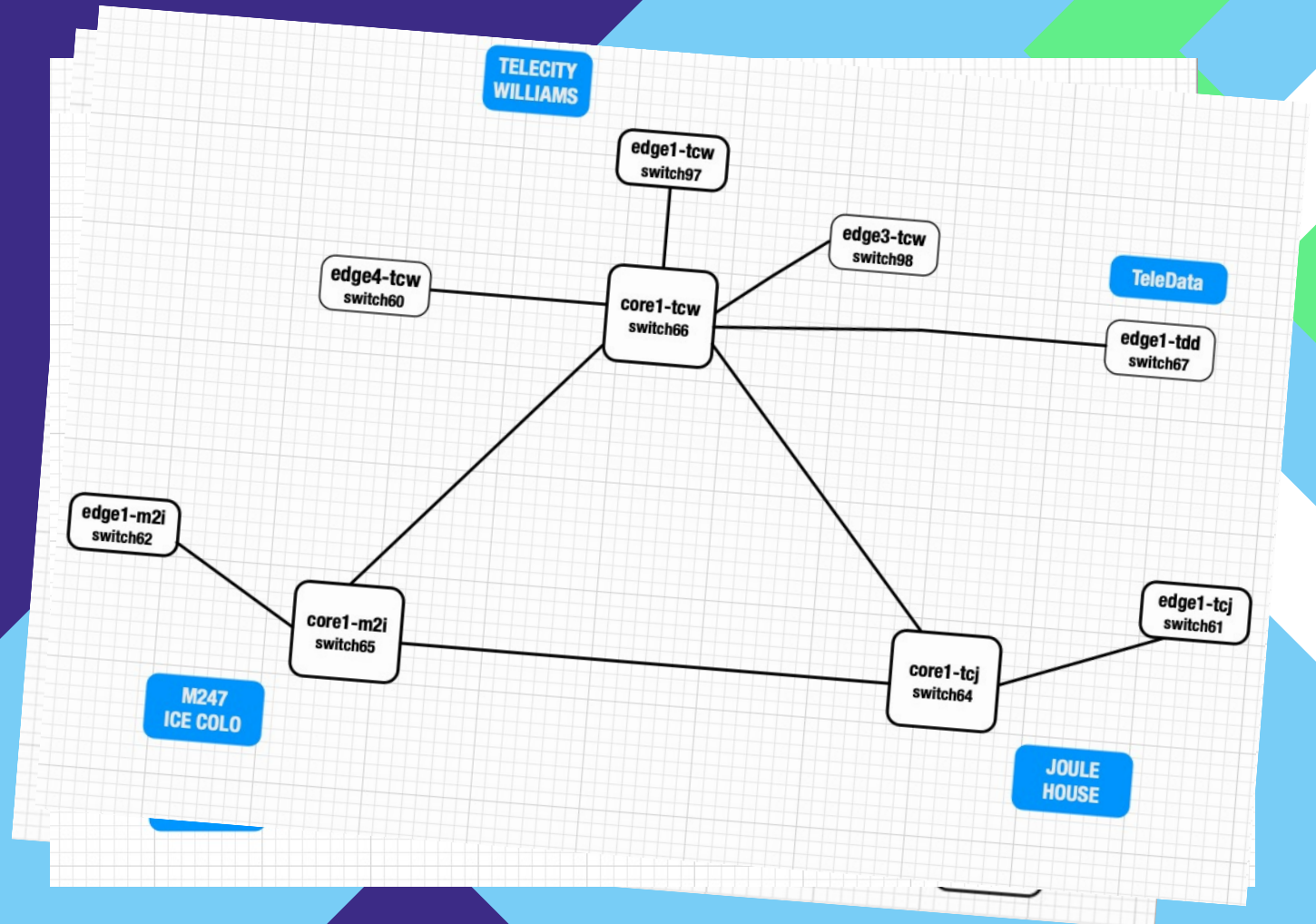
31/03/2021

# Areas we will cover

- 01 Brief history of the Manchester LAN
- 02 Recent upgrades to a disaggregated solution
- 03 Migration process
- 04 Benefits of the new solution

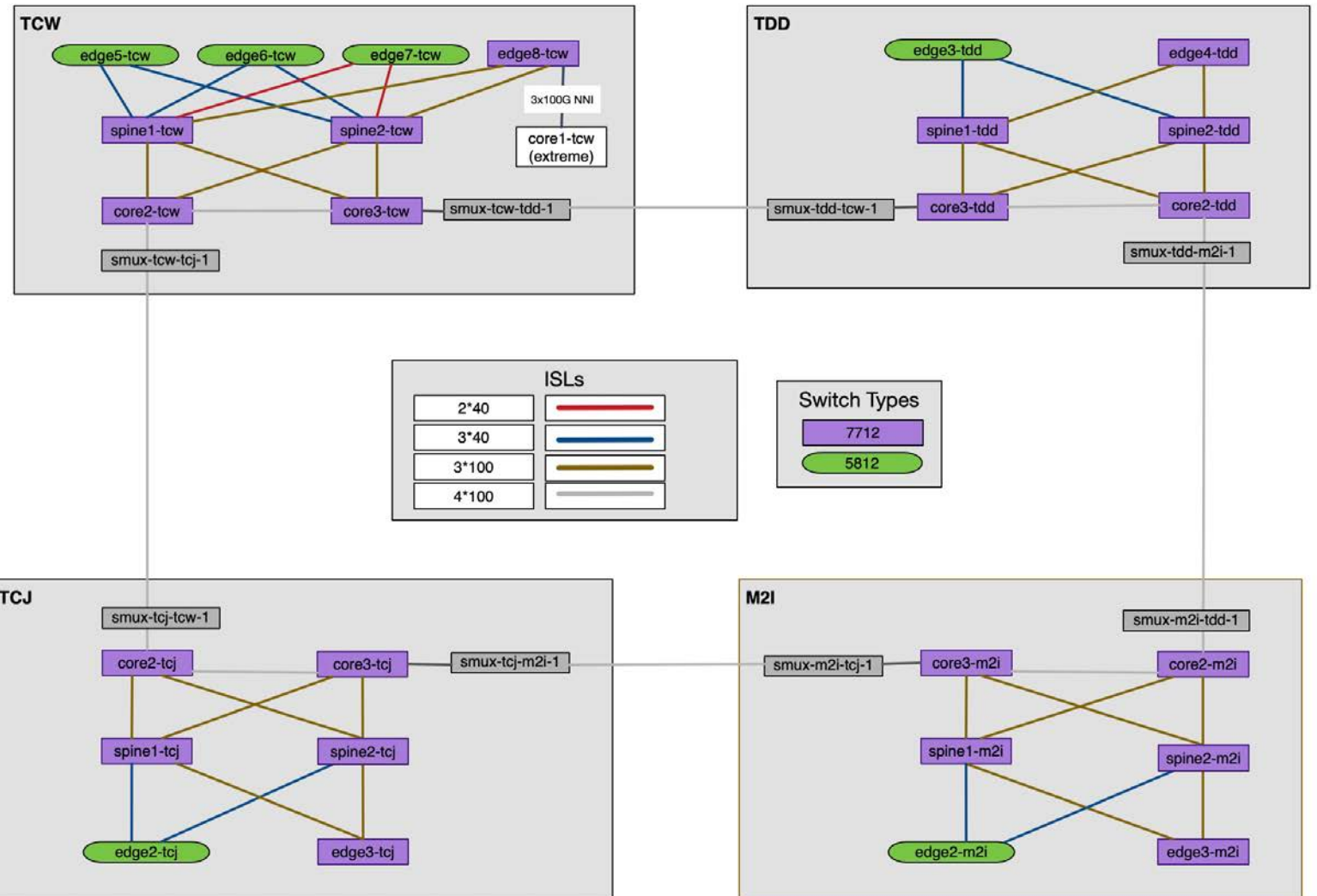
# History of the Manchester LAN

- > First 2018 sweep performed June 2012
- > upgrades across the three sites
- > Initially across three sites:
- > Extreme BDx8's to provide 100G
- > Equinix Williams House (TCW)
- > Following year 4<sup>th</sup> site TeleData
- > Equinix Joule House (TCJ)
- > added M247 (M2i)
- > Running on Extreme X670 and X460



# Recent Upgrades

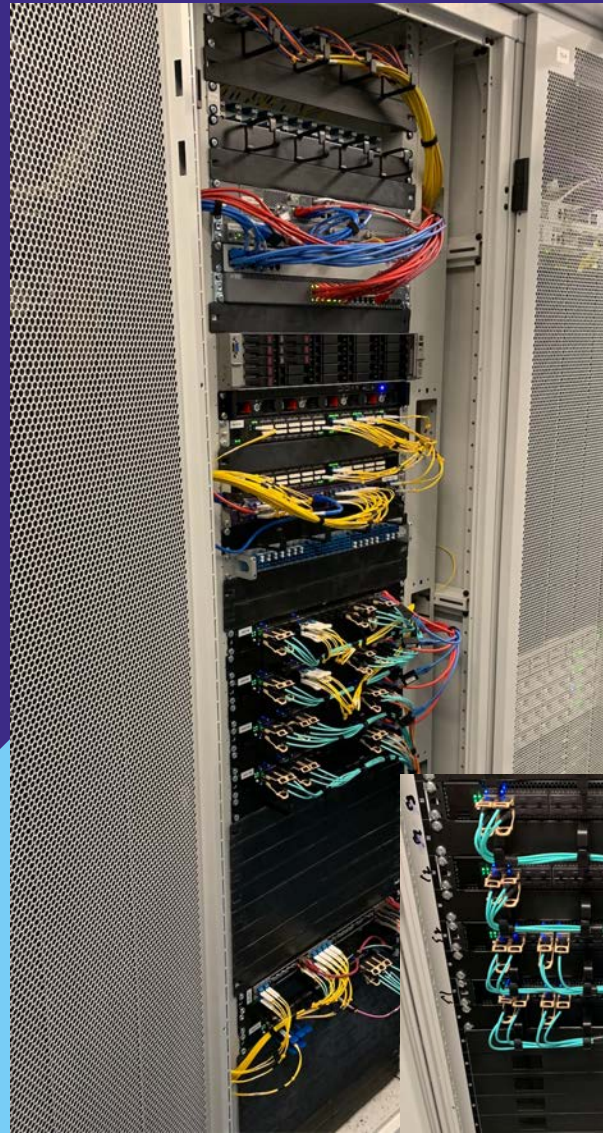
- Upgrade of entire Network to Edgecore IP Infusion disaggregated solution
- TeleData site upgraded to a full site
- ISLs between sites moved to SmartOptics and upgraded





# Migration Steps

- Used our experience from the LON2 and used much of the same process
- Parallel build First move was to move existing DF's so ISLs using new SmartOptics MUX
- NNI brought up between the networks
- Members moved site by site





# Benefits of the New Network

- Brought in line with LON2 technologies, including running EVPN
- LINX Manchester now fully automated
- Disaggregated solution is more cost effective
- We can now scale this network much more quickly and easily

# LINX Manchester in Numbers

153

Member Ports

3

Data Centre Partners

18

100G Ports

7

ConneXions Reseller Partners

69

10G Ports

174.13 Gbps

Peak Traffic



# Thank you



[support@linx.net](mailto:support@linx.net)



01733 207700



[facebook.com/LondonInternetExchange](https://facebook.com/LondonInternetExchange)



[twitter.com/linx\\_network](https://twitter.com/linx_network)



[linkedin.com/company/linx](https://linkedin.com/company/linx)