

The Cooperative Neutral Host



Cooperative Network
Infrastructure

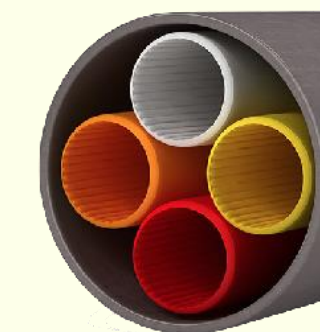
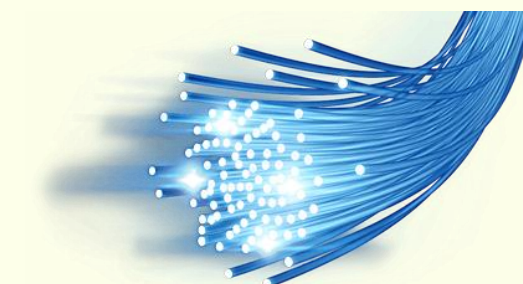
Service layer

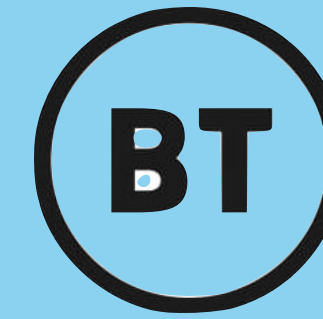


Active layer
electronics



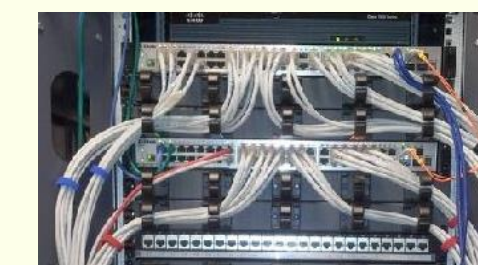
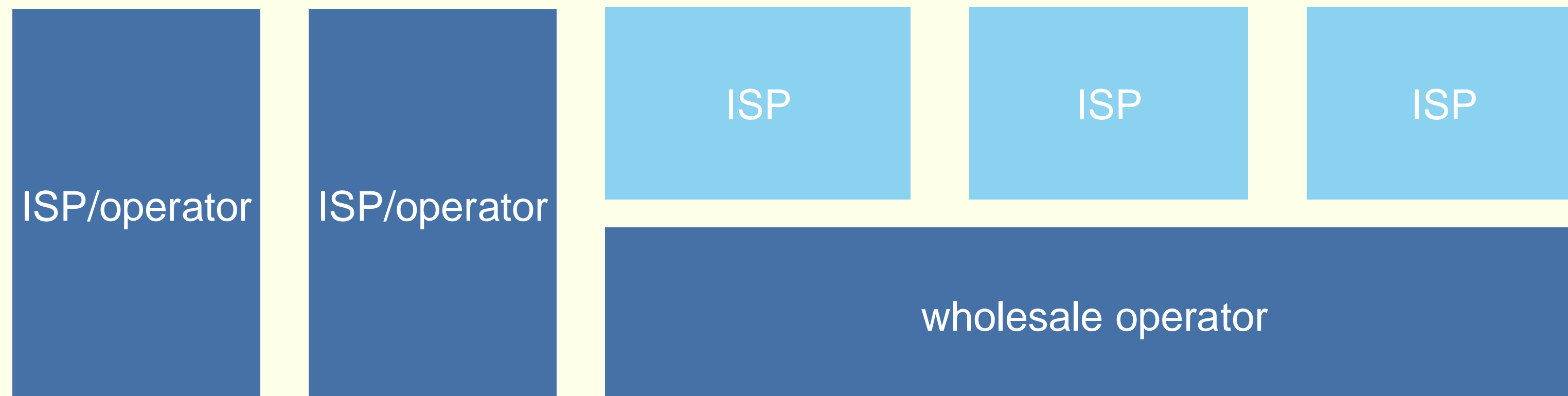
Passive layer
Fibre and ducting

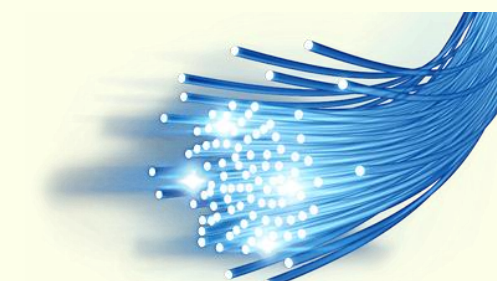
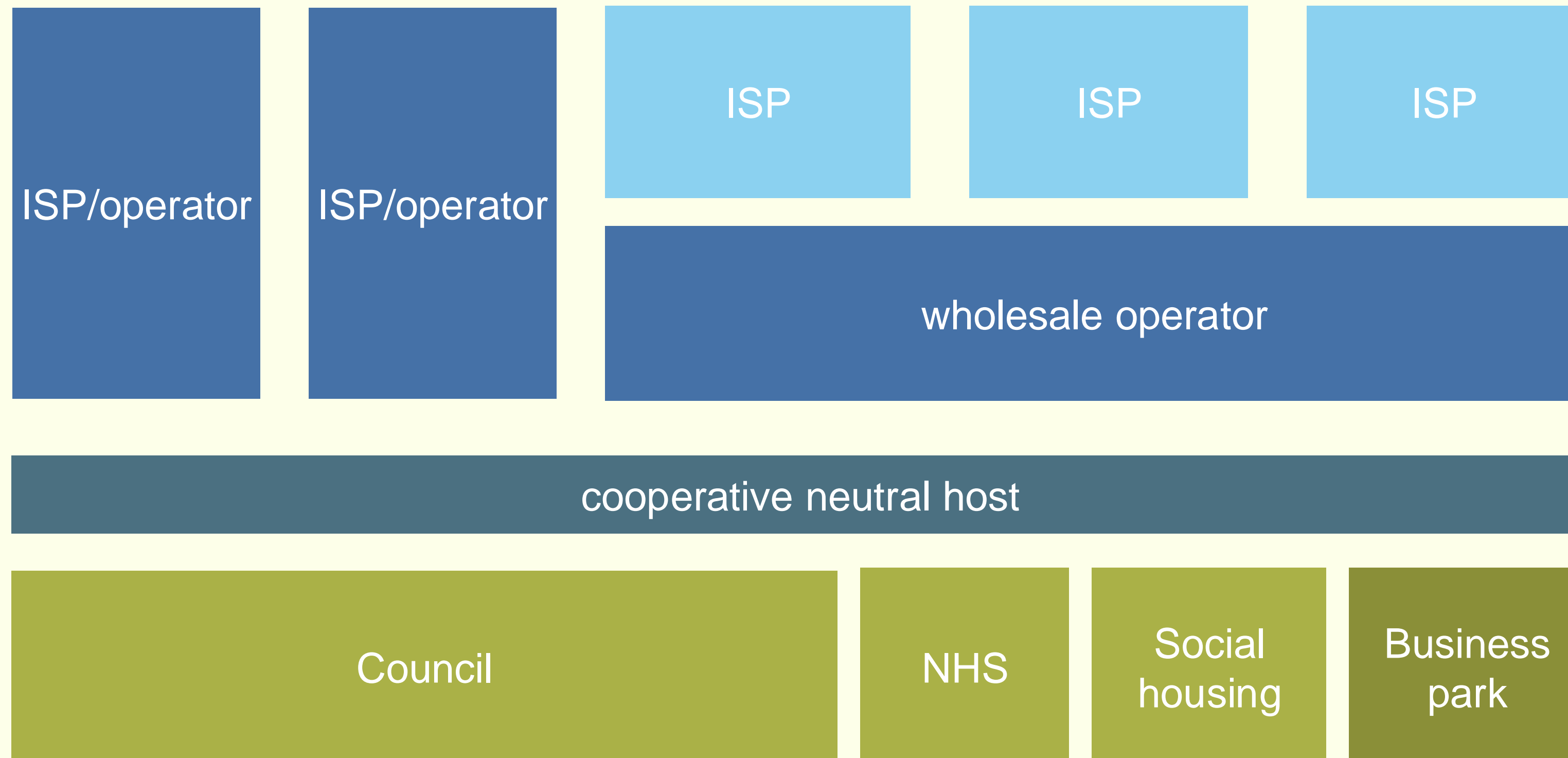




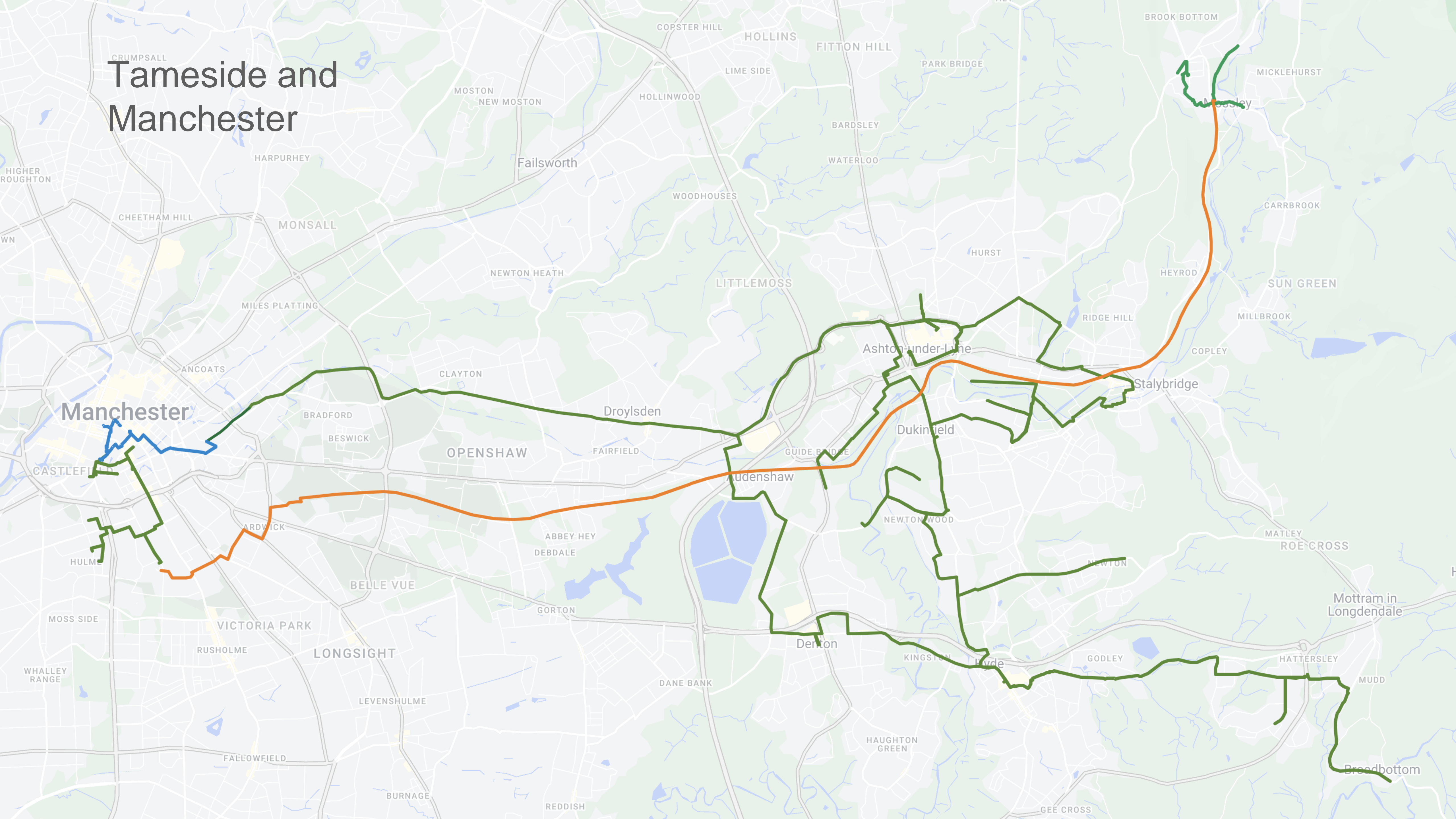
openreach



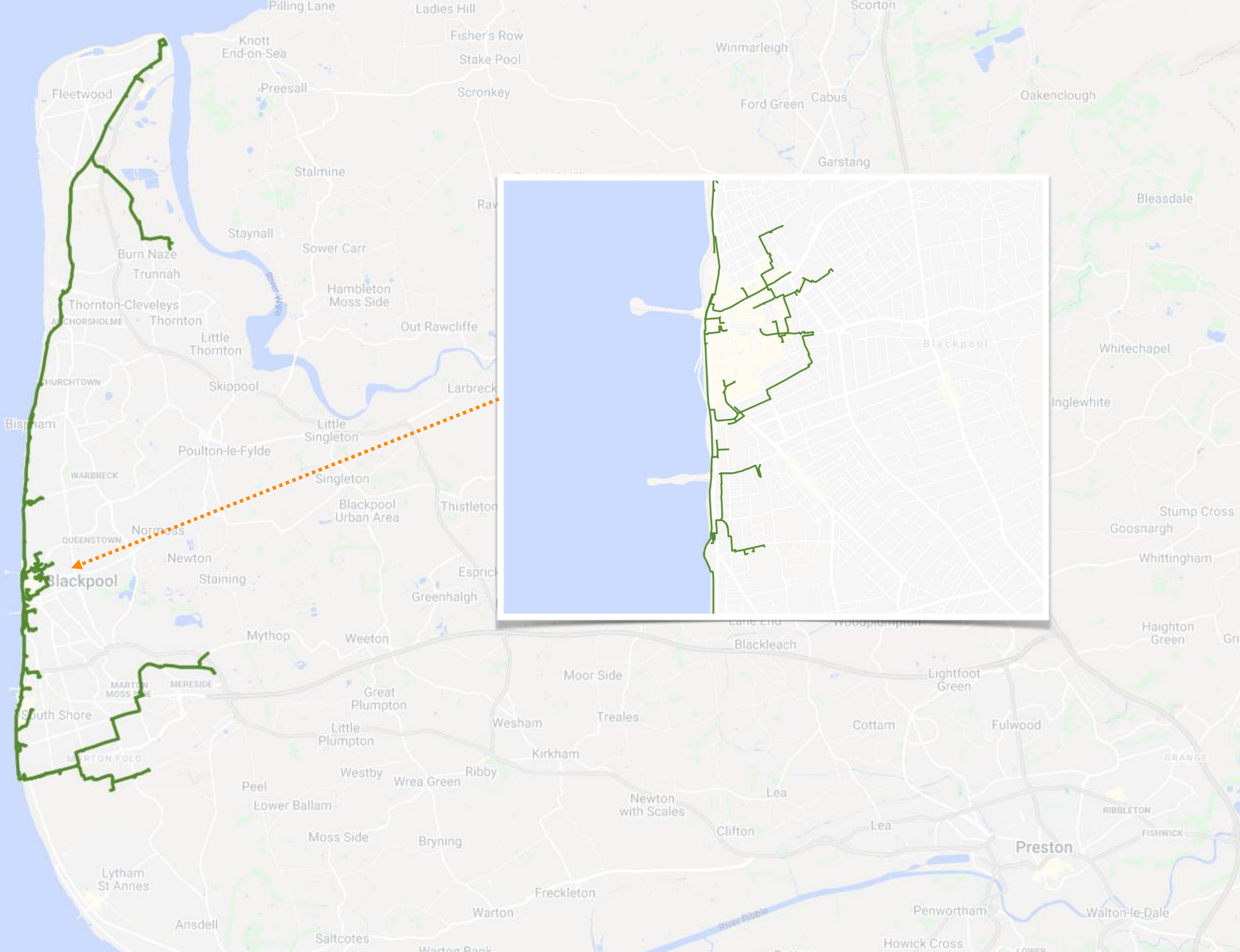




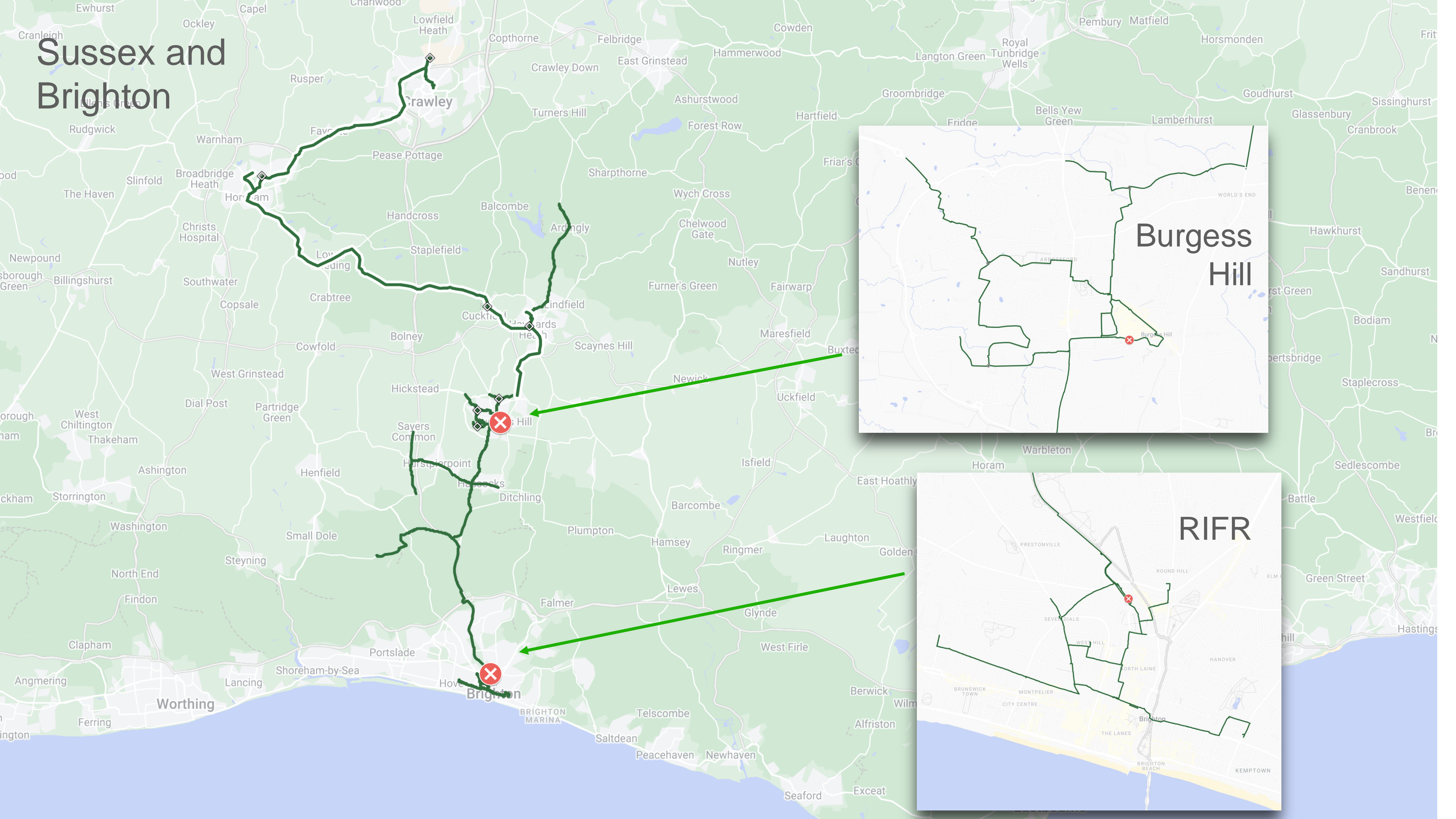
Tameside and Manchester



Blackpool and Fylde Coast



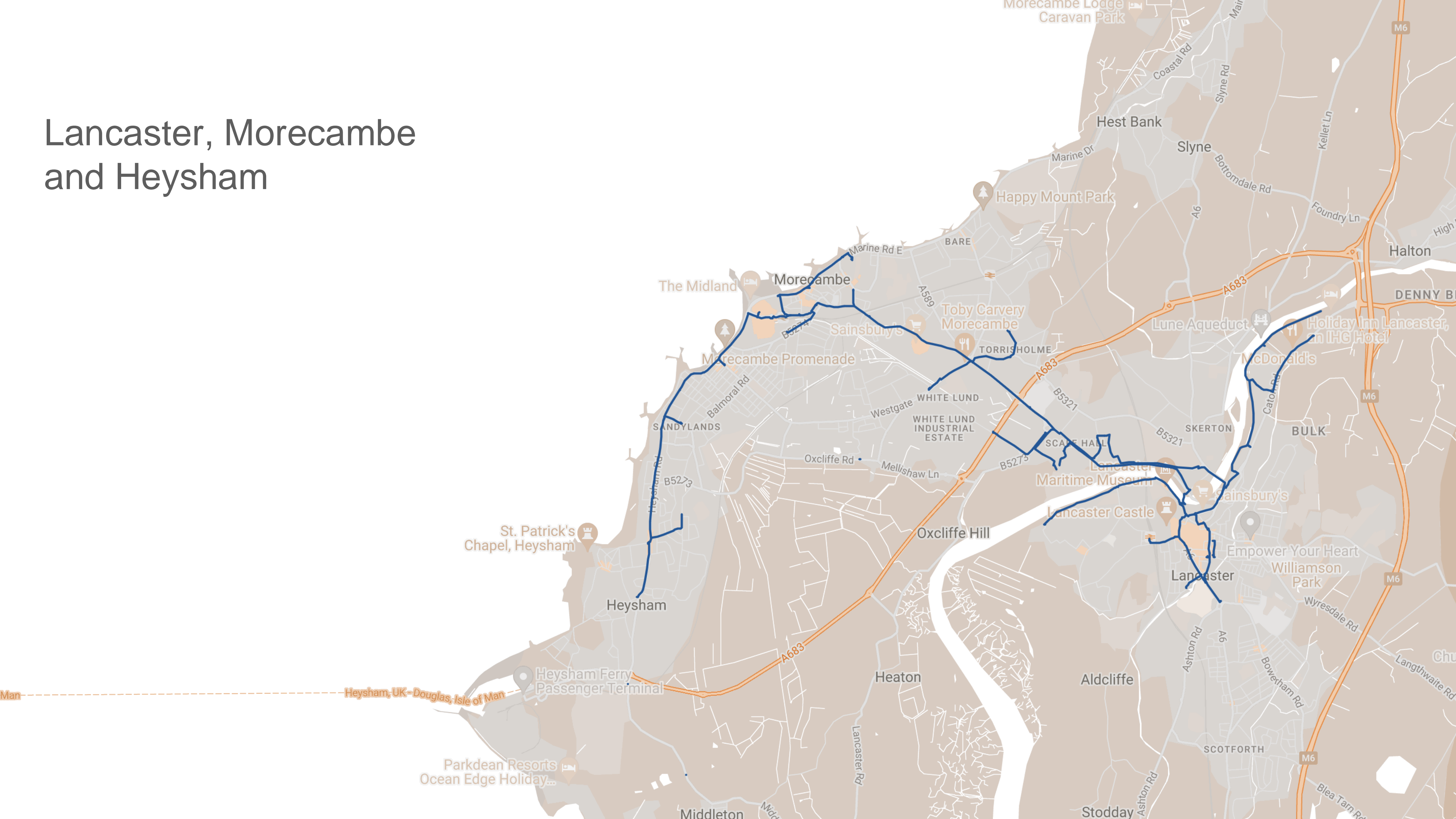
Sussex and Brighton



Burgess Hill

RIFR

Lancaster, Morecambe and Heysham





Public bodies

Urban councils

County and district councils

NHS

Education

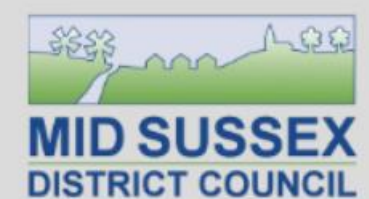
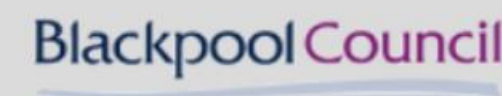
Social housing

Private business

Large telecoms operators

Smaller ISPs

Experts





Become a member

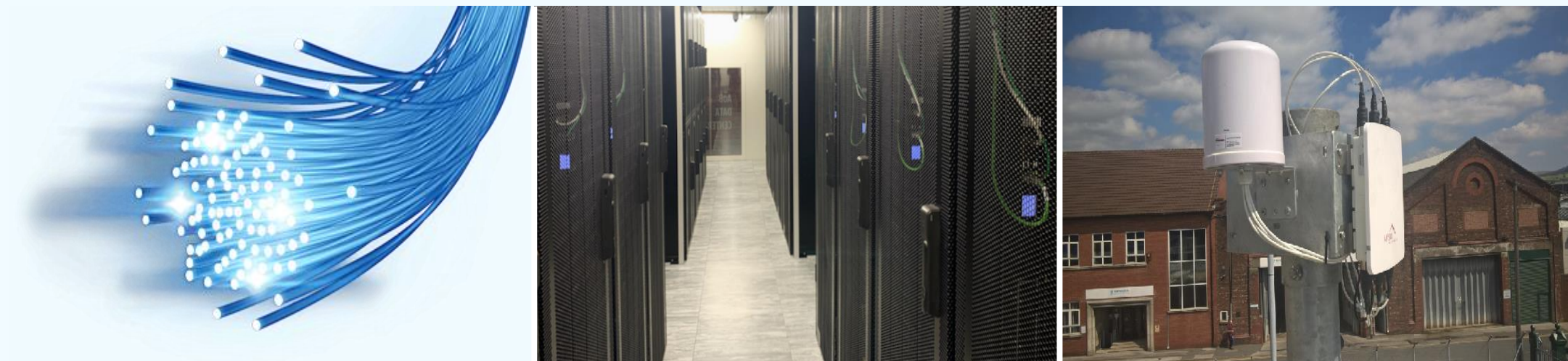
Get access to our layer 1 products
to reach customers and open up new areas

Join your network to ours
and open up new layer 1 sales

Co-invest with us and share
and free up valuable capital

Layer 1 products

Blackpool and Fylde coast
Brighton & Hove
Lancaster, Morecambe and Heysham
Manchester
Tameside and Glossop
Sussex, Brighton to Crawley



'Dark' fibre

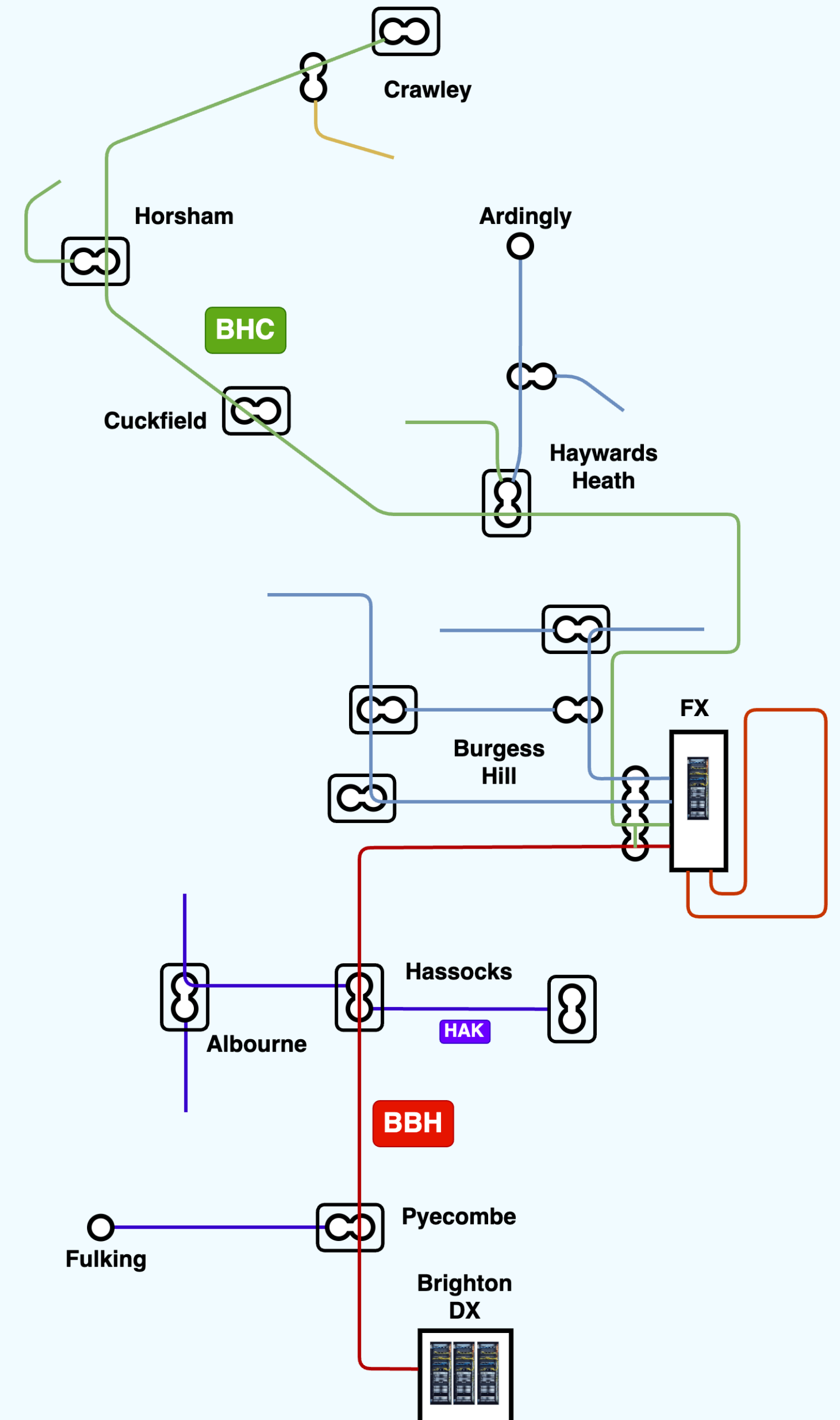
Rent or IRU

Colo

PoP and cabs, for
switching/routers or
servers

Antenna space

WiFi, fixed wireless and
5G



Join your network to ours



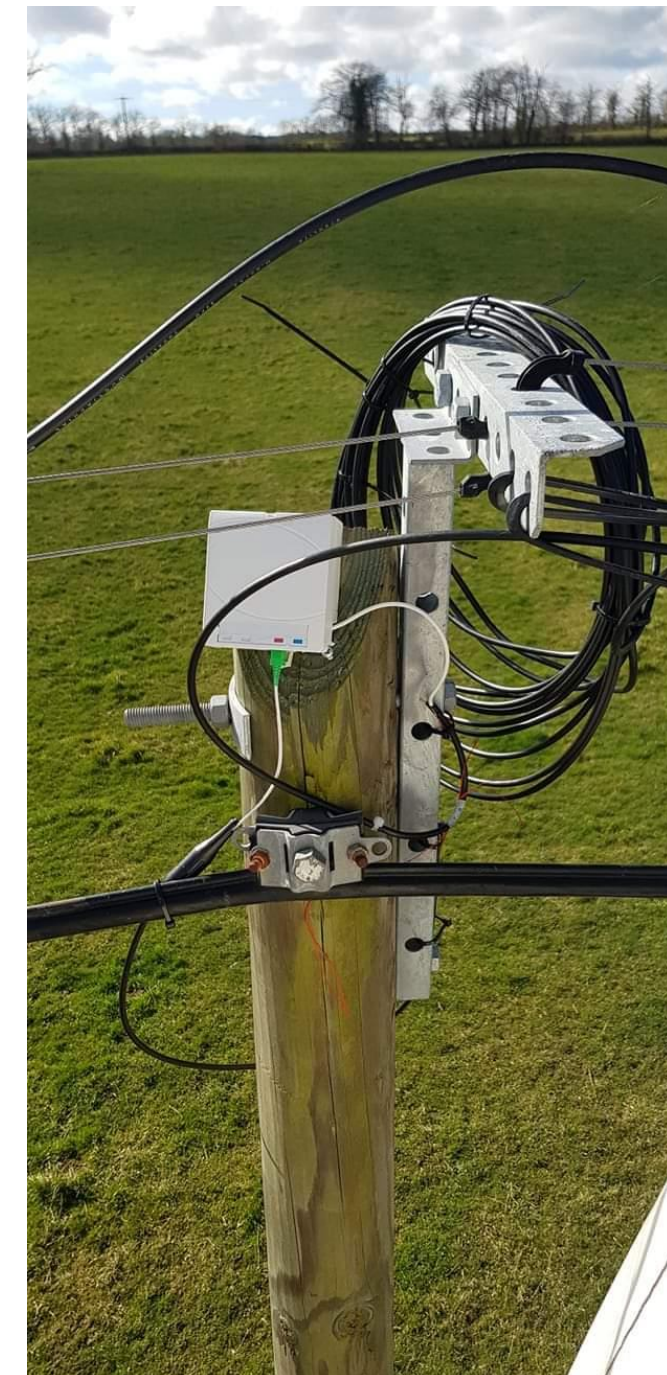
Co-invest and share

Interested in building with CNI?
Or selling us some of your
backhaul infrastructure?



“I want to see more and more projects like CNI, that make commercial sense and offer value to communities all at once”

Jonathan Reynolds, Secretary of State for Business and Trade



Telecoms minister Chris Bryant has urged broadband operators to share infrastructure
- *BBC*



“At points the mentality could have even been described as ‘build it and they will come’, with altnets focusing on the infrastructure build and rolling out the physical fibre networks as opposed to customer acquisition... Things have changed.”

Issy Gross, PwC



Thank you

shaun@cni.coop



Cooperative Network
Infrastructure