



CEO Update



Jennifer Holmes
CEO

19th November 2025
LINX 125





Since LINX123 – November 2024....

- + 30 net member growth
- +2tbps connected capacity
- +70 100GE ports connected
- +12 new 400GE ports
- Nearly +1Tbps aggregated traffic peak





Updates since LINX124



5th November 2025

[LINX News](#)

**LINX Launches New
Bandwidth for Increased
Member Flexibility**



13th October 2025

[LINX News](#)

**ISO 27001 Standard
Recertified for LINX**



7th October 2025

[Technology Blog](#)

**LINX Deploys OpenBGPD on
LON1**



18th August 2025

[LINX News](#) [Middle East](#)

**Network Upgrades at
center3 Internet Exchange
Point in Riyadh**



8th September 2025

[LINX Mombasa](#) [International](#) [LINX News](#)
[LINX Nairobi](#)

**LINX and Asteroid Enter Co-
operative Agreement for
East Africa**






Building LINX's Future Together




LINX's Strengths

- Membership Ecosystem
- Non-profit Status
- Longstanding experience and reputation
- Excellent Customer Service




**London Internet Exchange (LINX)**

12,095 followers
[Learn more](#)
4d • Edited • 

The LINX members asked and we delivered!

We are pleased to share that networks with multiple 100GE ports at any ...more

**New Bandwidth for Increased Member Flexibility Announced - LINX**
linx.net





Challenges for LINX

Vodafone leaves public internet exchange points

Vodafone is withdrawing from peering at public internet exchange points. Fees must be paid for private peering. It starts in Germany.



eraIX [Frankfurt](#) [Home](#) [Metro](#) [Statistics](#) [Members](#) [Pricing](#) [Services](#) [Resources](#) [About](#) [A Portal](#)

Frankfurt

The German internet hub with great connectivity towards Southern and Eastern-Europe.



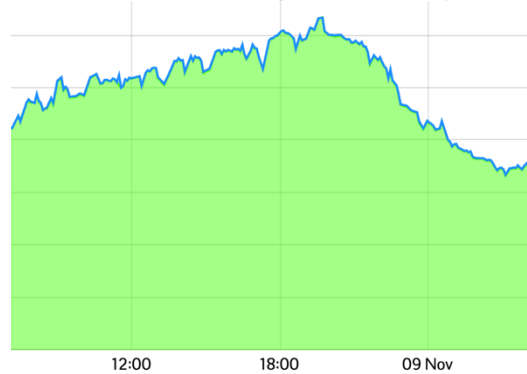
Traffic

Locations

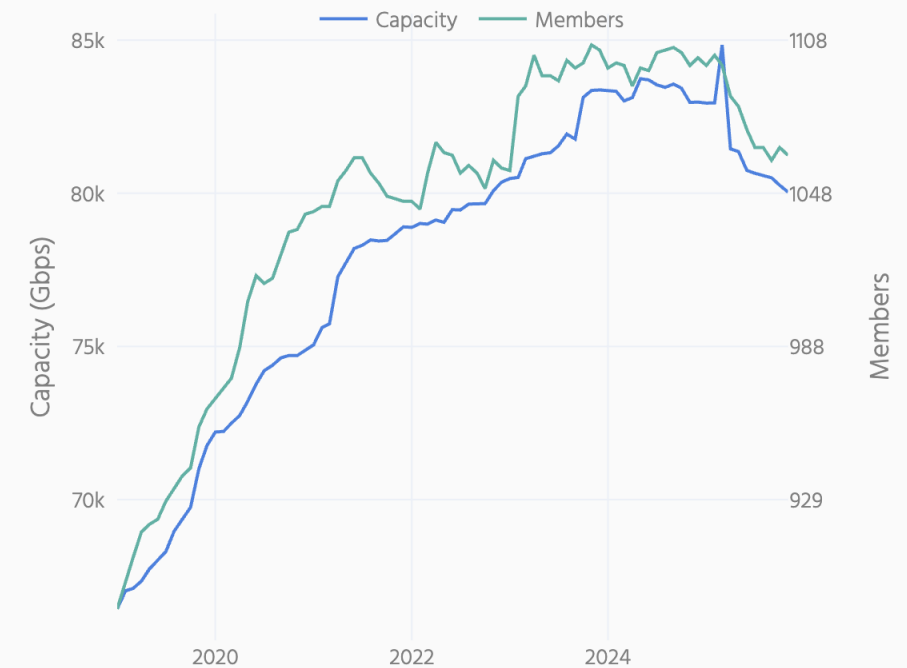
F

Daily traffic statistics

SpeedIX traffic daily



Measures changes in membership and capacity across all IXPs in United Kingdom, as shown in PeeringDB as of November 2025.





Not All Doom and Gloom....

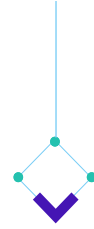
LAN	Connected Capacity YTD
LON1	+8.5%
LON2	+4%
Manchester	+15%
NoVA	+37%
Nairobi	+63%

- Member growth of +30 YTD
- Revenue growth this year
- Connected Capacity Growth
- New Traffic Peaks
- New partners and opportunities






2026 – 2028 Focus



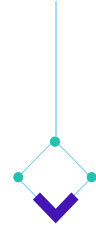
Building a stronger UK

 **London Internet Exchange (LINX)**
12,095 followers
[Learn more](#)
2mo • 🌐

How can we tell summer is over and everyone is back to school and work??

A new maximum traffic peak at [#LINXManchester](#) of course 🤖📈 Check it ...more





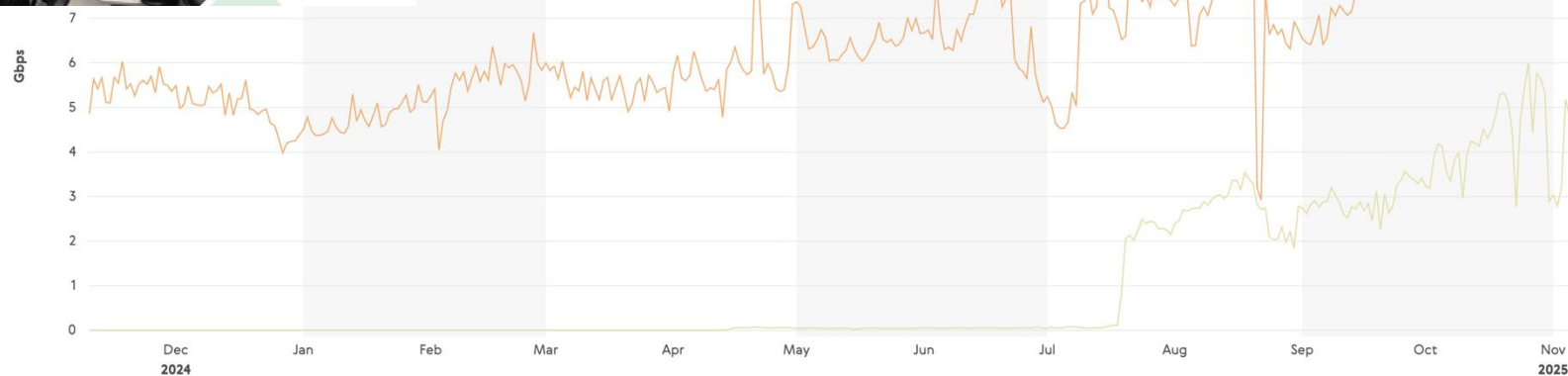
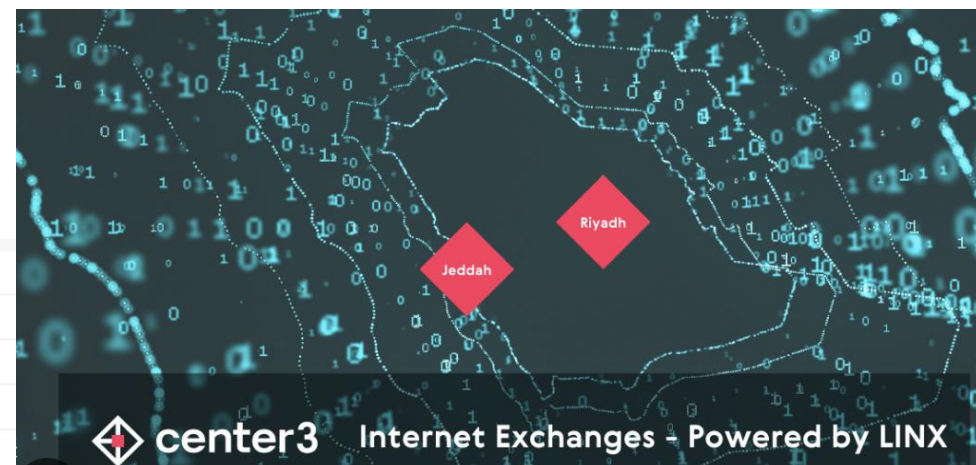
Innovation and Growth

- Increase **uptake in additional services** - securing more value for members
- Develop further value add services
- Build on strong relationships with partners in the industry to offer more value





Local Impact, Global Reach





Building LINX's Future...

- Invest in **staff development**, wellbeing and company culture
- Improve **business processes** for greater efficiencies, accuracy and compliance
- Adopt more **automation** and **AI** tooling
- Strengthen **reporting and insights**
- Mature our approach to **compliance and regulation**





..... Together



A white geometric graphic consisting of four nodes (small white circles) connected by lines to form a square with its diagonals. The nodes are positioned at the top, bottom, left, and right points. The background is a blue gradient with diagonal stripes.

**Thank You, any
Questions?**